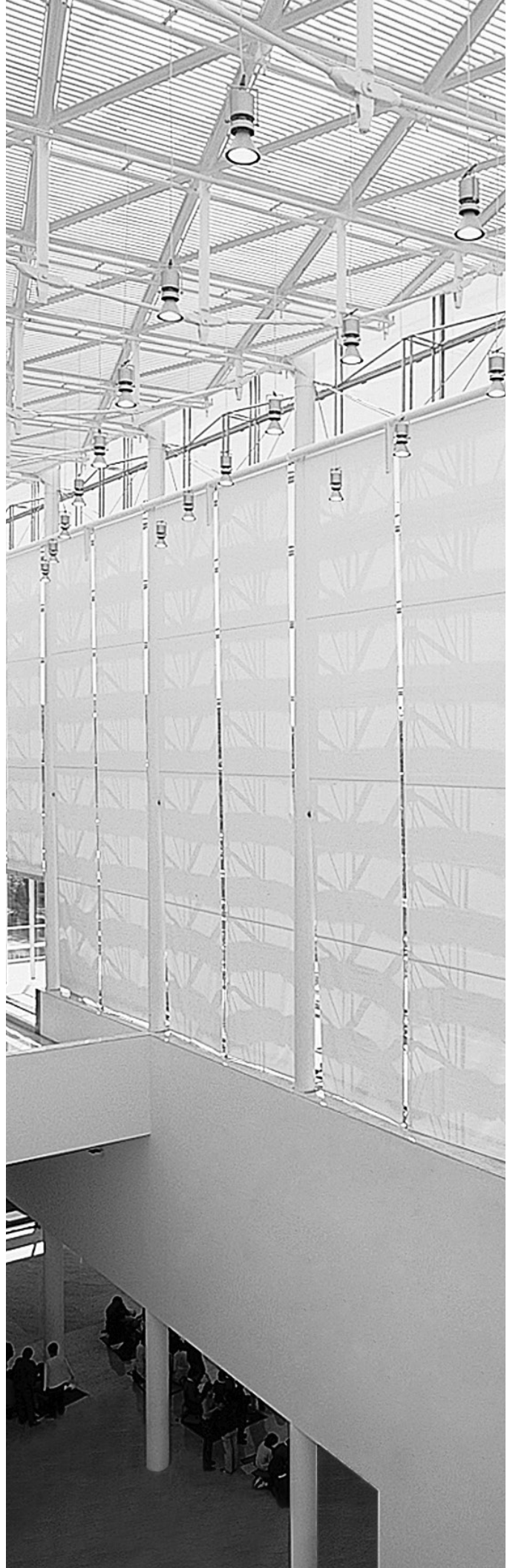




INFINITY<sub>2</sub><sup>®</sup>  
SUSTAINABLE FABRIC

---

WEAVING  
EXCELLENCE  
WITH  
INNOVATION



## Benefits of Infinity<sub>2</sub> include:

- 100% recyclable with active Reclamation Program that captures scrap from post-industrial (pre-consumer) and post-consumer sources
- Produced from 100% post-industrial (pre-consumer) recycled content
- Repeat recyclability for continued sustainability
- PVC-free
- Phthalate-free
- Lead-free
- Every component of this TPO compound is heat and chemically stable
- Resistant to microbial and fungal growth
- Durable and washable

		SOLAR OPTICAL PROPERTIES				SHGC/G VALUE g-tot (glass & blind)	
Code	Color	TS	RS	AS	TV	SINGLE 1/4 CL	INSULATING 1 HA
<b>INFINITY<sub>2</sub> - 1%</b>							
PG1	Cotton	20	68	12	18	0.29	0.22
PG2	Almond	15	61	24	12	0.31	0.23
PG3	Wheat	12	54	34	10	0.35	0.25
PG4	Stone	13	55	32	11	0.35	0.24
QG1	Barley	18	52	30	15	0.37	0.26
VG1	Nickel	8	37	55	7	0.42	0.30
VG2	Midnight	1	6	93	2	0.59	0.36
VG3	Bark	3	7	90	5	0.58	0.37
VG4	Slate	2	9	89	4	0.57	0.36
<b>INFINITY<sub>2</sub> - 3%</b>							
PG1	Cotton	20	70	10	19	0.28	0.21
PG2	Almond	17	61	22	15	0.32	0.23
PG3	Wheat	12	52	36	9	0.37	0.25
PG4	Stone	12	52	36	11	0.37	0.25
QG1	Barley	16	53	31	14	0.37	0.25
VG1	Nickel	9	36	55	8	0.44	0.30
VG2	Midnight	3	6	91	5	0.59	0.37
VG3	Bark	3	7	90	4	0.58	0.37
VG4	Slate	3	10	87	5	0.57	0.36
<b>INFINITY<sub>2</sub> - 5%</b>							
PG1	Cotton	23	68	9	22	0.30	0.22
PG2	Almond	20	60	20	18	0.33	0.23
PG3	Wheat	14	51	35	12	0.37	0.26
PG4	Stone	15	52	33	14	0.37	0.25
QG1	Barley	19	51	30	17	0.38	0.26
VG1	Nickel	10	34	56	11	0.45	0.30
VG2	Midnight	5	6	89	8	0.60	0.37
VG3	Bark	4	7	89	6	0.59	0.37
VG4	Slate	5	9	86	7	0.58	0.36



The Next Generation of Sustainable Fabric



PRODUCT CERTIFIED FOR  
LOW CHEMICAL EMISSIONS  
UL.COM/GG  
UL 2818



TS = Solar Transmittance  
RS = Solar Reflectance  
AS = Solar Absorptance  
TV = Visual Transmittance

SHGC = Solar Heat Gain Coefficient

1/4 CL = 1/4" Clear Glass  
1 HA = 1" Heat Absorbing Glass

Fabrics Installed Internally  
Zero-Degree Profile Angle

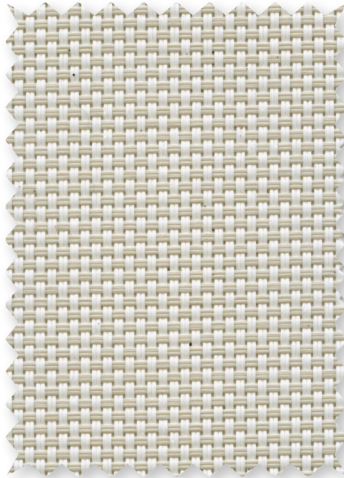
For additional performance values,  
test references and technical  
definitions visit us at [phifer.com](http://phifer.com).



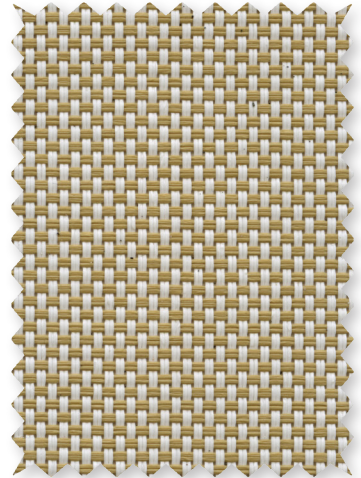
PG1 **Cotton**



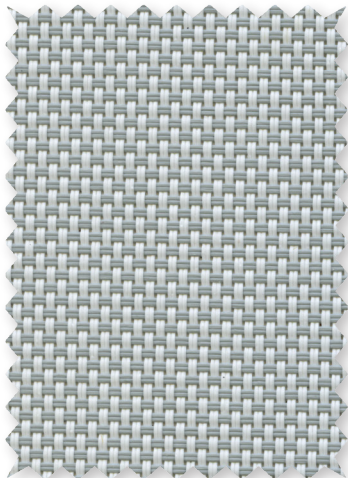
PG2 **Almond**



PG3 **Wheat**



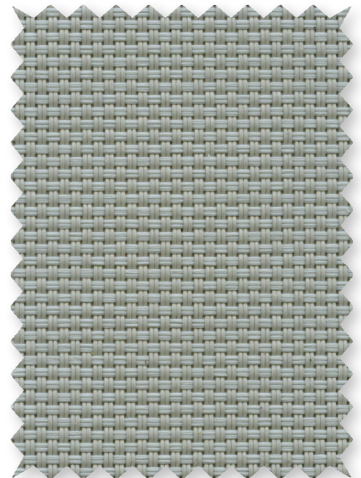
PG4 **Stone**



QG1 **Barley**



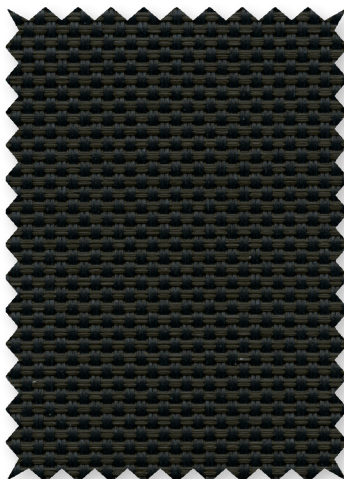
VG1 **Nickel**



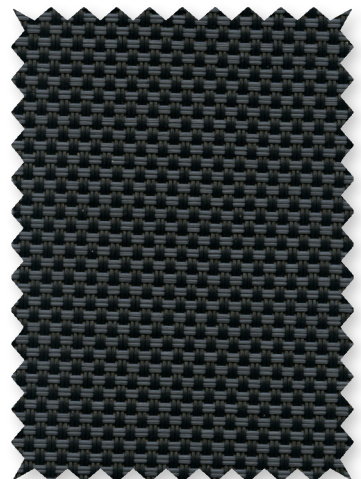
VG2 **Midnight**



VG3 **Bark**



VG4 **Slate**



\*Colors may vary based on individual computer settings and should only be used for general reference.

# INFINITY<sub>2</sub> SPECIFICATIONS

SheerWeave Infinity<sub>2</sub> sustainable sun control fabrics are eco-friendly full basketweaves designed to meet the most stringent environmental design standards. With 100% recycled content, 100% recyclable, and a PVC-free composition, Infinity<sub>2</sub> fabrics offer the same solar heat and glare control properties as traditional SheerWeave fabrics for conserving energy, harnessing natural light and maintaining interior comfort levels.

<b>FIRE CLASSIFICATION</b>	NFPA 101 (Class A Rating) NFPA 701 TM#1 (small scale) IBC Section 803.1.1 (Class A Rating)	CAN/ULC-S 109 (large and small scale)
<b>1%, 3%, 5%</b>		
<b>3%, 5% ONLY</b>	BS 5867 Part 2 Type B Performance	
<b>5% ONLY</b>	CAN/CGSB2-4.162-M80	
	<i>Fire classifications are subject to change. Please go to <a href="http://phifer.com">phifer.com</a> for the most current information.</i>	
<b>BACTERIA AND FUNGAL RESISTANCE</b>	ASTM E 2180	ASTM G21
<b>ENVIRONMENTAL CERTIFICATION</b>	GREENGUARD	GREENGUARD Gold
	Certified to these standards for low chemical emissions into indoor air during product usage	
<b>SAFE USE</b>	RoHS/Directive 2002/95/EC ANSI/WCMA A 100.1-2007 for lead content	REACH (EC 1907/2006) compliant US Consumer Product Safety Commission Section 101
<b>WARRANTY</b>	5-year interior	
<b>ACOUSTICAL PERFORMANCE</b>	NRC (Noise Reduction Coefficient) and SAA (Sound Absorption Average) tested in accordance with ASTM C423-09a	
<b>UV PROTECTION</b>	SheerWeave sun control fabrics are an effective way to reduce harmful UV rays. Phifer Incorporated is a proud member of the Skin Cancer Foundation's Corporate Council.	

STYLE	1%	3%	5%
<b>WIDTHS</b>	63" and 98" 160 cm and 248.9 cm	63" and 98" 160 cm and 248.9 cm	63" and 98" 160 cm and 248.9 cm
<b>ROLL LENGTH</b>	30 Linear Yards 27.4 Linear Meters	30 Linear Yards 27.4 Linear Meters	30 Linear Yards 27.4 Linear Meters
<b>COMPOSITION</b>	100% TPO (Thermoplastic Olefin) 20% TPO fiber yarn 80% TPO coating on TPO yarn	100% TPO (Thermoplastic Olefin) 20% TPO fiber yarn 80% TPO coating on TPO yarn	100% TPO (Thermoplastic Olefin) 20% TPO fiber yarn 80% TPO coating on TPO yarn
<b>MESH WEIGHT</b>	13.9 oz/yd <sup>2</sup> 471 g/m <sup>2</sup>	13.69 oz/yd <sup>2</sup> 464.17 g/m <sup>2</sup>	12.82 oz/yd <sup>2</sup> 434.67 g/m <sup>2</sup>
<b>FABRIC THICKNESS</b>	0.032 in 0.813 mm	0.031 in 0.787 mm	0.030 in 0.762 mm
<b>OPENNESS FACTOR</b>	Approximately 1%	Approximately 3%	Approximately 5%
<b>UV BLOCKAGE</b>	Approximately 99%	Approximately 97%	Approximately 95%
<b>ACOUSTICAL VALUE</b>	NRC .20 / SAA .23	NRC .20 / SAA .19	NRC .10 / SAA .11

**PHIFER**  
INCORPORATED

P. O. Box 1700 • Tuscaloosa, Alabama 35403-1700 USA  
Phone: 205.345.2120 • FAX: 205.391.0799  
Toll Free USA/Canada: 1.800.221.5497  
[phifer.com](http://phifer.com) • ISO Registered



© SheerWeave and SheerWeave Infinity are registered trademark of PHIFER INCORPORATED.  
™ UL, the UL logos and the UL mark are trademarks of UL LLC.  
Photo courtesy of Rielamericano, Buenos Aires, Argentina.  
© PHIFER INCORPORATED V22 041823 3033845